

Product Specifications

LED control card HD-U64 (USB Port)

V2.0 20170901

Overview

For signage, store, car, outdoor advertising and other information display, HUIDU technology launched our U-disk series control card, for updates the display programs by the USB port.

U64 is a U-disk series control card, through the USB port to update the program. Low cost, cost-effective, simple software interface, easy to operate, better and rich display effect, support for a variety of monochrome display.

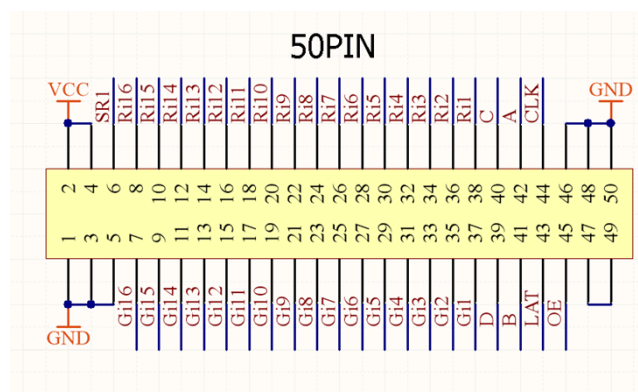
Application software: Huidu technology sixth generation display operating software HD2016.

Features

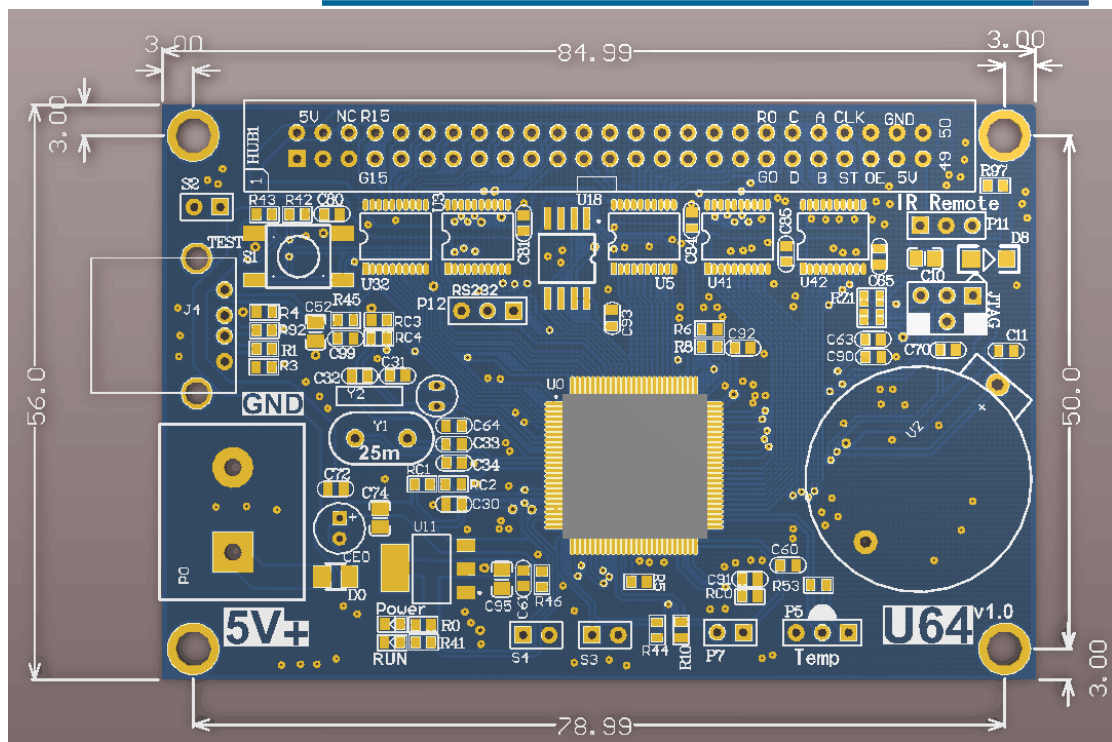
Content	Performance
Support module	Single color/ dual color/ Tri color
Control range	Single color: 512W*256H (Widest 2048) Dual color: 256W*256H Tri color: 320W*128H
FLASH Capacity	8M Byte
Communication Port	U-Disk
HUB signal	1 of 50pin,also can connect HUB12,HUB08etc
Program Quantity	1000pcs Programs. also can change program by button or remote if weld sensor (Remoter can select1-999 Programs)
Area Quantity	20 areas with separate zone, and separated special effects and border
Display Showing	Used indoor outdoor, semi-outdoor, Led Pharmacy Cross signs Showing text, animation, time, clock etc
Display effect	1.Support all languages(Software :HD2016) 2.Support 7 color effects and Gray level (HD-U62/U63/U64)

Display effects	<p>3. Border functions of Program border, area border and Custom design border.</p> <p>4.Add Countdown /Count up, Button Countdown / Count up</p> <p>5.Add Text Rotation of 90°、 180°、 270° for display Text function of Hollow、 Stroke etc</p> <p>6.Add payment collection function</p> <p>7.Updated program by U-disk</p> <p>8. More than 200 types showing effects</p>
Clock function	<p>1、 Support calendar, analog clock, lunar calendar</p> <p>2, is timing, countdown display</p> <p>3, display font, size, location, etc. can be arbitrarily set</p> <p>4, support for multiple time zone display</p>
Extended Equipment	Remote function、 temperature、 humidity、 brightness etc. (If weld sensor) .Remoter can select1-999 Programs
Automatic switch screen	Support switch on/off display by time automatically
Brightness adjustment	Brightness setting by Custom、 Automatic(weld sensor) by time period regulation

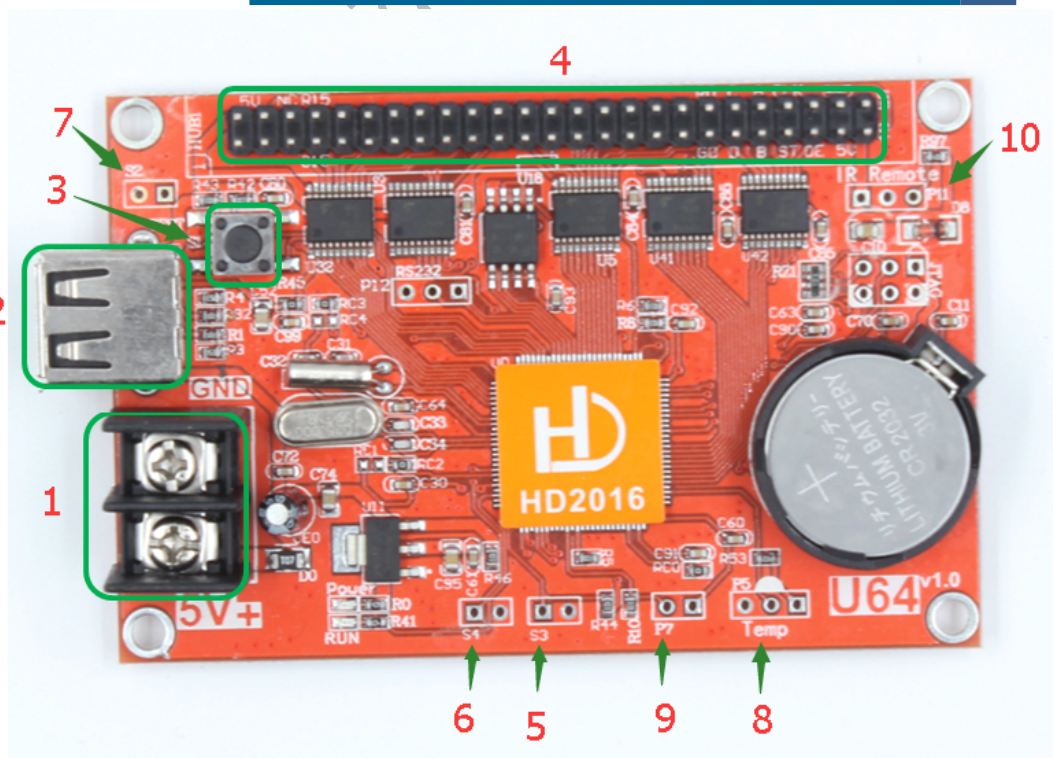
Port Definition



Setup Diagram



HD-U64 Photo



- ①: Power connector, connect 5V power supply;
- ②: USB ports, Updated program by U-disk;
- ③: Test button, click to switch screen test status;
- ④: A group universal 50PIN, connect the display;
- ⑤: S3, connect the point switch, switch the previous program, timer reset, count down;
- ⑥: S4, connect the point switch, program control, time-out, count reset;
- ⑦: S2, connect the point switch, switch the next program, the timer starts, count plus;
- ⑧: P5, connect temperature / humidity sensor;
- ⑨: P7, connect the brightness sensor;
- ⑩: P11, connected to the infrared receiver, with the remote control.

Technical Parameters

	Minimum	Typical value	Maximum
Rated voltage (V)	4.2	5.0	5.5
Storage temperature(°C)	-40	25	105
Work environment temperature (°C)	-40	25	80
Work environment humidity (%)	0.0	30	95

Precautions

- 1) To ensure that the control card is stored during normal operation, make sure the battery on the control card is not loose;
- 2) In order to ensure the long-term stable operation of the system, please try to use the standard 5V power supply voltage.