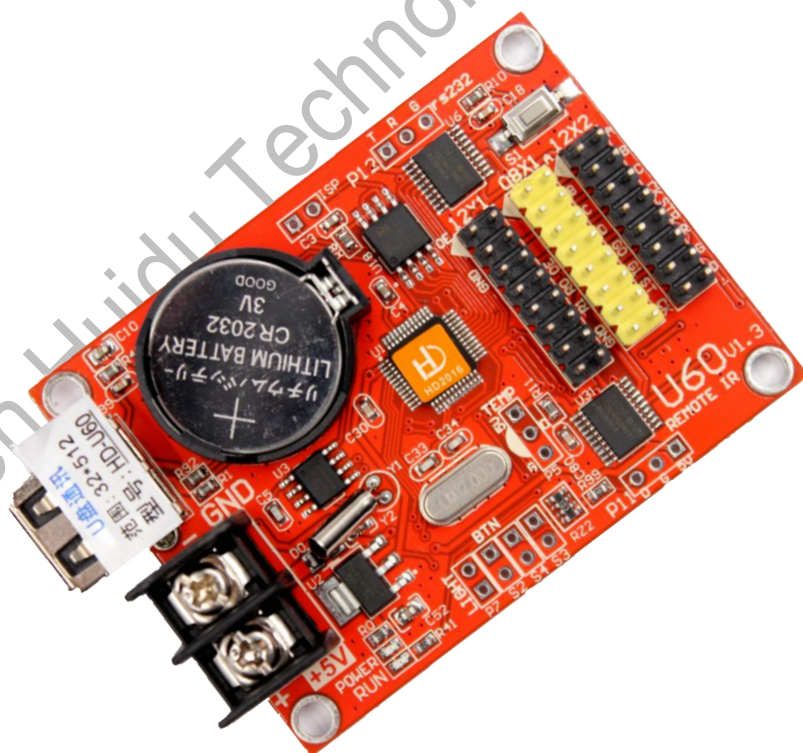


Product Specifications
Led control card HD-U60 (USB Port)



V2.0 20170901

Overview

For signage, store, outdoor advertising and other information display, HUIDU technology launched our U-disk series control card, updated the display programs by the USB port.

U60 is U-disk series control card, through the USB port to update the program. Cost-effective, simple software to operate, better and rich display effects, support for a variety of monochrome display.

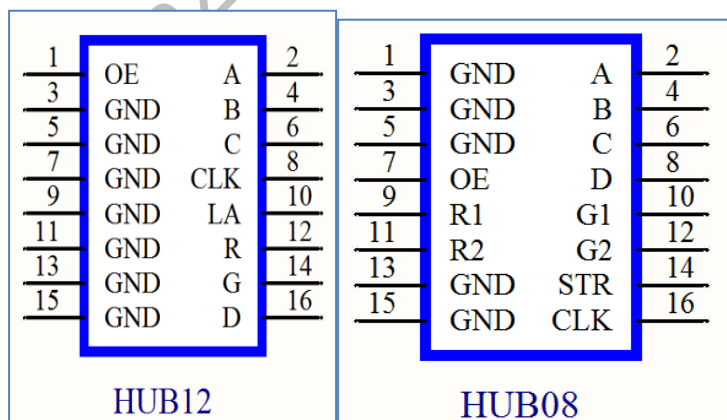
Application software: HD2018

Features

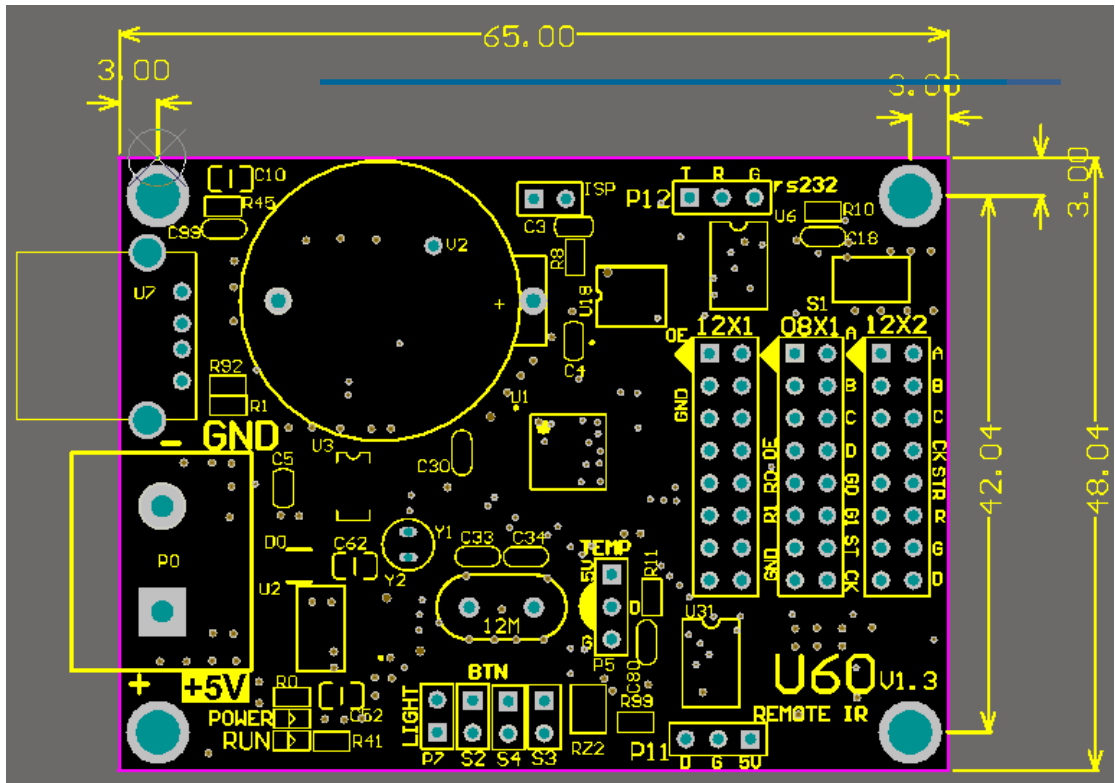
Content	Parameters
Support module	Single color/ Dual color/Tricolor
Control range Resolution	Single color: 512W*32H Dual color: 256W*32H Tricolor: 160W*32H
FLASH Capacity	2M Byte
Communication Port	U-Disk
HUB signal	2HUB12,1 HUB08
Program Quantity	1000pcs Programs. also can change program by button or remote if weld sensor (Remoter can select 1-999 Programs)
Area Quantity	20 areas with separate zone, and separated special effects and border
Display Showing	Text、 Animation word、 Time、 Count、 Lunar calendar
Display effects	1.Support all languages(Software :HD2018) 2.Support 7 color effects and Gray level (HD-U62/U63/U64) 3. Border functions of Program border, area border and Custom

Display effect	<p>design border.</p> <p>4.Add Countdown /Count up, Button Countdown / Count up</p> <p>5.Add Text Rotation of 90° 、 180° 、 270° for display</p> <p>Text function of Hollow、 Stroke etc</p> <p>6.Add payment collection function</p> <p>7.Updated program by U-disk</p> <p>8. More than 200 types showing effects</p> <p>9.Support Second develop SDK</p>
Clock function	<p>1. Support Digital Clock/ Dial Clock / Lunar Time/</p> <p>2.Countdown /Count up, Button Countdown / Count up</p> <p>3. The font、 size、 color and position can be set freely</p> <p>4. Support multiple time zones</p>
Extended Equipment	Remote function、 temperature、 humidity、 brightness etc. (If weld sensor) .Remoter can select1-999 Programs
Automatic switch screen	Support switch on/off display automatically
Brightness adjustment	Brightness setting by Custom、 Automatic(weld sensor)、 by time period regulation

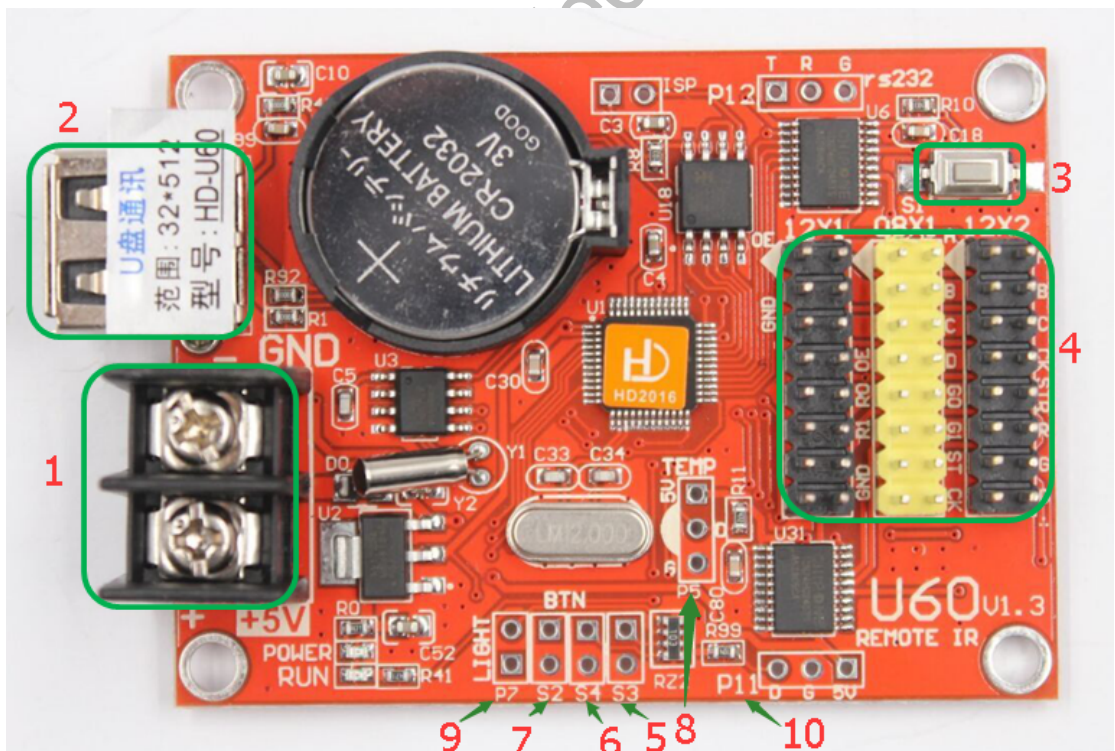
Port Definition



Setup Diagram



HD-U60 Photo



- ①: Power connector, connect 5V power supply;
- ②: USB ports, Updated program by U-disk;

- ③ : Test button, click to switch screen test status;
- ④ : 2HUB12, 1HUB08, connect the display;
- ⑤ : S3, connect the point switch, switch the previous program, timer reset, count down;
- ⑥ : S4, connect the point switch, program control, time-out, count reset;
- ⑦ : S2, connect the point switch, switch the next program, the timer starts, count plus;
- ⑧ : P5, connect temperature / humidity sensor;
- ⑨ : P7, connect the brightness sensor;
- ⑩ : P11, connected to the infrared receiver, with the remote control.

Technical Parameters

	Minimum	Typical value	Maximum
Rated voltage (V)	4.2	5.0	5.5
Storage temperature(°C)	-40	25	105
Work environment temperature (°C)	-40	25	80
Work environment humidity (%)	0.0	30	95

Precautions

- 1) To ensure that the control card is stored during normal operation, make sure the battery on the control card is not loose;
- 2) In order to ensure the long-term stable operation of the system, please try to use the standard 5V power supply voltage.